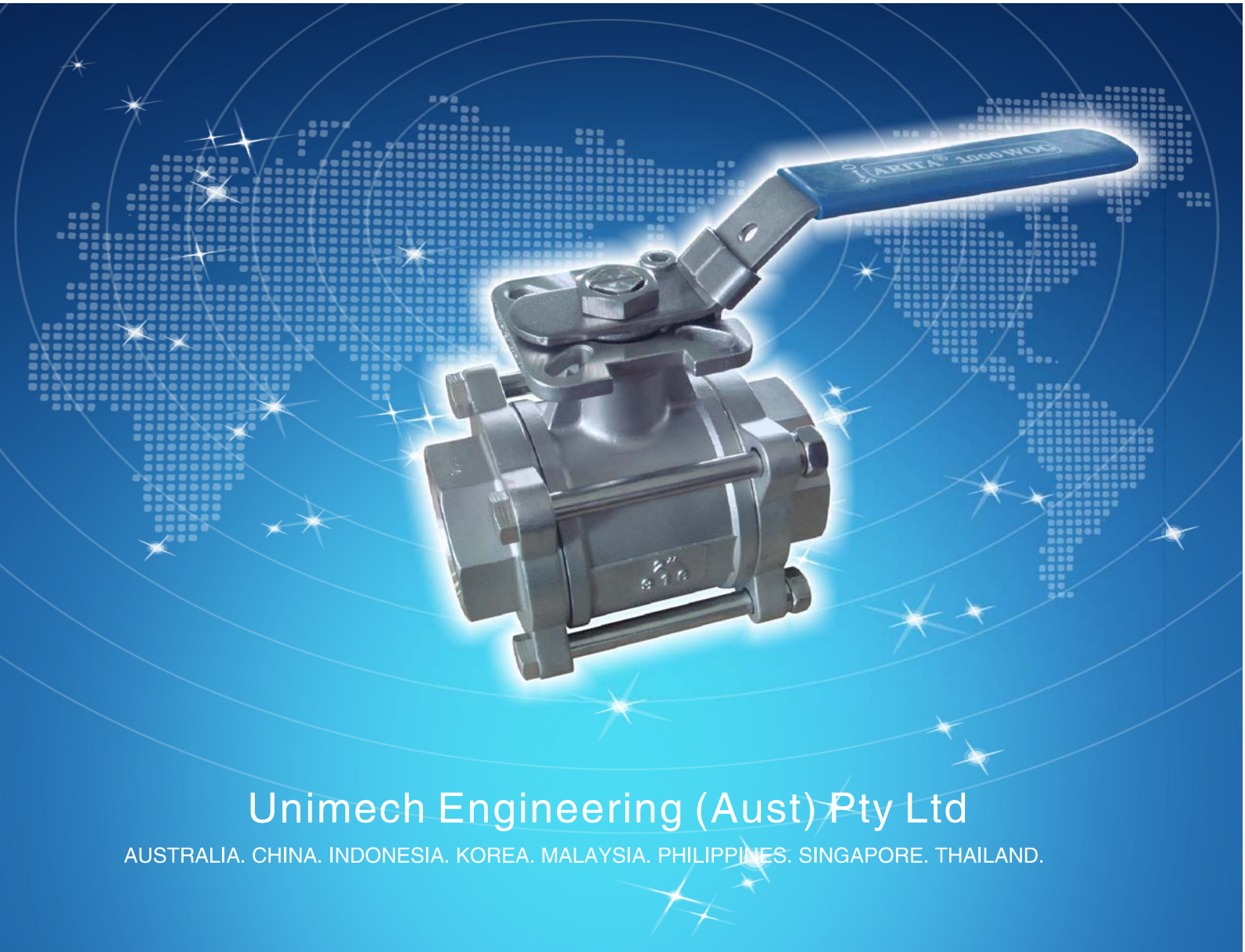




INDUSTRIAL VALVES & FITTINGS



Unimech Engineering (Aust) Pty Ltd

AUSTRALIA. CHINA. INDONESIA. KOREA. MALAYSIA. PHILIPPINES. SINGAPORE. THAILAND.



MINI BALL VALVE THREADED (F/F) BSP

MATERIAL	SUS316				
SIZE	1/4"	3/8"	1/2"	3/4"	1"



MINI BALL VALVE THREADED (F/M) BSP

MATERIAL	SUS316				
SIZE	1/4"	3/8"	1/2"	3/4"	1"



MINI BALL VALVE THREADED (M/M) BSP

MATERIAL	SUS316				
SIZE	1/4"	3/8"	1/2"	3/4"	1"



1-PC BALL VALVE THREADED BSP

MATERIAL	SUS316				
SIZE	1/4"	3/8"	1/2"	3/4"	1"
	1 1/4"	1 1/2"	2"	2 1/2"	3"



2-PC BALL VALVE THREADED BSP / NPT

MATERIAL	SUS316					
SIZE	1/4"	3/8"	1/2"	3/4"	1"	1 1/4"
	1 1/2"	2"	2 1/2"	3"	4"	-



3-PC BALL VALVE THREADED BSP / NPT

MATERIAL	SUS316					
SIZE	1/4"	3/8"	1/2"	3/4"	1"	1 1/4"
	1 1/2"	2"	2 1/2"	3"	4"	-



3-PC BALL VALVE WITH MOUNTING PAD ISO5211 THREADED BSP

MATERIAL	SUS316					
SIZE	1/4"	3/8"	1/2"	3/4"	1"	1 1/4"
	1 1/2"	2"	2 1/2"	3"	4"	-



THREE WAY BALL VALVE WITH MOUNTING PAD ISO5211 THREADED (TYPE-L) BSP

MATERIAL	SUS316					
SIZE	1/4"	3/8"	1/2"	3/4"	1"	1 1/4"
	1 1/2"	2"	-	-	-	-



THREE WAY BALL VALVE WITH MOUNTING PAD ISO5211 THREADED (TYPE-T) BSP

MATERIAL	SUS316					
SIZE	1/4"	3/8"	1/2"	3/4"	1"	1 1/4"
	1 1/2"	2"	-	-	-	-



GATE VALVE THREADED BSP

MATERIAL	SUS316					
SIZE	1/2"	3/4"	1"	1 1/4"	1 1/2"	2"
	2 1/2"	3"	-	-	-	-



GLOBE VALVE THREADED BSP

MATERIAL	SUS316					
SIZE	1/2"	3/4"	1"	1 1/4"	1 1/2"	2"
	2 1/2"	3"	-	-	-	-



SWING CHECK VALVE THREADED BSP

MATERIAL	SUS316					
SIZE	1/2"	3/4"	1"	1 1/4"	1 1/2"	2"
	2 1/2"	3"	-	-	-	-


**2-PC SPRING VERTICAL
CHECK VALVE THREADED
BSP / NPT**

MATERIAL	SUS316					
SIZE	1/4"	3/8"	1/2"	3/4"	1"	1 1/4"
	1 1/2"	2"	-	-	-	-


**3-PC SPRING VERTICAL
CHECK VALVE THREADED
BSP / NPT**

MATERIAL	SUS316					
SIZE	1/4"	3/8"	1/2"	3/4"	1"	1 1/4"
	1 1/2"	2"	-	-	-	-


**Y-STRAINER THREADED
BSP / NPT**

MATERIAL	SUS316				
SIZE	1/4"	3/8"	1/2"	3/4"	1"
	1 1/4"	1 1/2"	2"	2 1/2"	3"


**3-PC FIRE SAFE BALL VALVE
BSP / NPT / SW**

MATERIAL	SUS316				
SIZE	1/2"	3/4"	1"	1 1/4"	1 1/2"
	2"	-	-	-	-


**NEEDLE VALVE
NPT**

MATERIAL	SUS316				
SIZE	1/4"	3/8"	1/2"	3/4"	1"
	-	-	-	-	-


**SS BUTTERFLY VALVE WAFER
UNIVERSAL**

MATERIAL	SUS316				
SIZE	2"	3"	4"	5"	6"
	8"	10"	-	-	-


**SS BUTTERFLY VALVE LUGGED
ANSI 150 / TABLE-E**

MATERIAL	SUS316				
SIZE	2"	3"	4"	5"	6"
	8"	10"	-	-	-


**BUTTERFLY VALVE
SHOULDER**

MATERIAL	DUCTILE IRON				
SIZE	4"	6"	-	-	-
	-	-	-	-	-


**BUTTERFLY VALVE WAFER
UNIVERSAL**

MATERIAL	CAST IRON					
SIZE	2"	2 1/2"	3"	4"	5"	6"
	8"	10"	12"	14"	16"	-


**BUTTERFLY VALVE LUGGED
ANSI 150 / TABLE-E**

MATERIAL	CAST IRON							
SIZE	2"	2 1/2"	3"	4"	5"	6"	8"	
	10"	12"	14"	16"	18"	20"	24"	


**BUTTERFLY VALVE DOUBLE FLANGE
TABLE-E**

MATERIAL	DUCTILE IRON				
SIZE	6"	8"	10"	12"	14"
	-	-	-	-	-


**DUAL PLATE WAFER
CHECK VALVE**

MATERIAL	CAST IRON				
SIZE	1 1/2"	2"	2 1/2"	3"	4"
	6"	8"	10"	12"	14"


**Y-STRAINER FLANGED
TABLE-E**

MATERIAL	CAST IRON					
SIZE	2"	2 1/2"	3"	4"	5"	6"
	8"	10"	12"	-	-	-


**FIRE SAFE BALL VALVE FLANGED
ANSI 150 / 300 / 600**

MATERIAL	SUS316					
SIZE	1/2"	3/4"	1"	1 1/4"	1 1/2"	2"
	2 1/2"	3"	4"	5"	6"	-


**2-PC BALL VALVE FLANGED
ANSI 150 / TABLE-E**

MATERIAL	SUS316					
SIZE	1/2"	3/4"	1"	1 1/4"	1 1/2"	2"
	2 1/2"	3"	4"	5"	6"	8"


**GATE VALVE FLANGED
ANSI 150**

MATERIAL	SUS316					
SIZE	1/2"	3/4"	1"	1 1/4"	1 1/2"	2"
	2 1/2"	3"	4"	5"	6"	8"


**GLOBE VALVE FLANGED
ANSI 150**

MATERIAL	SUS316					
SIZE	1/2"	3/4"	1"	1 1/4"	1 1/2"	2"
	2 1/2"	3"	4"	5"	6"	8"


**SWING CHECK VALVE FLANGED
ANSI 150**

MATERIAL	SUS316					
SIZE	1/2"	3/4"	1"	1 1/2"	2"	2 1/2"
	3"	4"	5"	6"	8"	-


**DUAL PLATE WAFER
CHECK VALVE ANSI 150**

MATERIAL	SUS316				
SIZE	2"	2 1/2"	3"	4"	5"
	6"	8"	10"	12"	-


**Y-STRAINER FLANGED
ANSI 150**

MATERIAL	SUS316					
SIZE	1/2"	3/4"	1"	1 1/4"	1 1/2"	2"
	2 1/2"	3"	4"	5"	6"	8"


**3 WAY L-PORT FLANGED
ANSI 150**

MATERIAL	SUS316					
SIZE	1"	1 1/2"	2"	2 1/2"	3"	4"
	-	-	-	-	-	-


**3 WAY T-PORT FLANGED
ANSI 150**

MATERIAL	SUS316					
SIZE	1"	1 1/2"	2"	2 1/2"	3"	4"
	-	-	-	-	-	-


**BELLOW SEAL GLOBE VALVE FLANGED
PN16 / 25 / 40**

MATERIAL	WCB					
SIZE	2"	2 1/2"	3"	4"	-	-
	-	-	-	-	-	-


**FIRE SAFE BALL VALVE
ANSI 150 / 300 / 600**

MATERIAL	WCB						
SIZE	1/2"	3/4"	1"	1 1/4"	1 1/2"	2"	2 1/2"
	3"	4"	6"	8"	10"	-	-


**GATE VALVE FLANGED
ANSI 150**

MATERIAL	WCB					
SIZE	1"	1 1/2"	2"	2 1/2"	3"	4"
	6"	8"	10"	12"	-	-


**GLOBE VALVE FLANGED
ANSI 150**

MATERIAL	WCB					
SIZE	1"	1 1/2"	2"	2 1/2"	3"	4"
	6"	8"	-	-	-	-


**SWING CHECK VALVE FLANGED
ANSI 150**

MATERIAL	WCB					
SIZE	2"	2 1/2"	3"	4"	6"	8"
	10"	-	-	-	-	-


**Y-STRAINER FLANGED
ANSI 150**

MATERIAL	WCB					
SIZE	2"	2 1/2"	3"	4"	6"	8"
	-	-	-	-	-	-


**GATE VALVE FLANGED
ANSI 300**

MATERIAL	WCB					
SIZE	2"	2 1/2"	3"	4"	6"	8"
	-	-	-	-	-	-


**GLOBE VALVE FLANGED
ANSI 300**

MATERIAL	WCB					
SIZE	2"	2 1/2"	3"	4"	6"	
	-	-	-	-	-	-


**SWING CHECK VALVE FLANGED
ANSI 300**

MATERIAL	WCB					
SIZE	2"	2 1/2"	3"	4"	6"	8"
	10"	-	-	-	-	-


**3-PC BALL VALVE 800LB
BSP / NPT / SW**

MATERIAL	A105N					
SIZE	1/2"	3/4"	1"	1 1/4"	1 1/2"	2"


**GATE VALVE 800LB
BSP / NPT / SW**

MATERIAL	A105N					
SIZE	1/2"	3/4"	1"	1 1/4"	1 1/2"	2"


**GLOBE VALVE 800LB
BSP / NPT / SW**

MATERIAL	A105N					
SIZE	1/2"	3/4"	1"	1 1/4"	1 1/2"	2"


**SWING CHECK VALVE 800LB
BSP / NPT / SW**

MATERIAL	A105N					
SIZE	1/2"	3/4"	1"	1 1/4"	1 1/2"	2"


**PISTON CHECK VALVE 800LB
NPT**

MATERIAL	A105N					
SIZE	1/2"	3/4"	1"	1 1/4"	1 1/2"	2"


2 PISTON PNEUMATIC ACTUATOR SR / DA

4 PISTON PNEUMATIC ACTUATOR SR / DA

CAMLOKS

TYPE A ADAPTOR FEMALE
TYPE B COUPLER MALE
TYPE C COUPLER HOSE SHANK
TYPE D COUPLER FEMALE

MATERIAL	SUS316				
SIZE	1/2"	3/4"	1"	1 1/4"	1 1/2"
	2"	2 1/2"	3"	4"	6"

MATERIAL	SUS316				
SIZE	1/2"	3/4"	1"	1 1/4"	1 1/2"
	2"	2 1/2"	3"	4"	6"

MATERIAL	SUS316				
SIZE	1/2"	3/4"	1"	1 1/4"	1 1/2"
	2"	2 1/2"	3"	4"	6"

MATERIAL	SUS316				
SIZE	1/2"	3/4"	1"	1 1/4"	1 1/2"
	2"	2 1/2"	3"	4"	6"


TYPE E ADAPTOR HOSE SHANK
TYPE F ADAPTOR MALE
TYPE DC DUST CAP
TYPE DP DUST PLUG

MATERIAL	SUS316				
SIZE	1/2"	3/4"	1"	1 1/4"	1 1/2"
	2"	2 1/2"	3"	4"	6"

MATERIAL	SUS316				
SIZE	1/2"	3/4"	1"	1 1/4"	1 1/2"
	2"	2 1/2"	3"	4"	6"

MATERIAL	SUS316				
SIZE	1/2"	3/4"	1"	1 1/4"	1 1/2"
	2"	2 1/2"	3"	4"	6"

MATERIAL	SUS316				
SIZE	1/2"	3/4"	1"	1 1/4"	1 1/2"
	2"	2 1/2"	3"	4"	6"


90° ELBOW

90° STREET ELBOW

45° ELBOW

CROSS

TEE

UNIONS

HEXAGON CAP

HEXAGON BUSHING

HEXAGON PLUG

**SOCKET
O.D.MACHINED**

TANK SOCKET

**REDUCING SOCKET
BANDED**

HEXAGON NIPPLE

**REDUCING HEXAGON
NIPPLE**

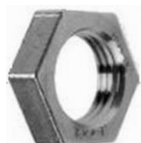
BARREL NIPPLE

PIPE NIPPLE

TOE NIPPLE

HEX WELD NIPPLE

HOSETAIL

REDUCING HOSETAIL

BACKING NUT

TUBE NIPPLE

Stockists of:

API valves
Cast steel valves
Forged steel valves
Stainless steel screwed end valves
Stainless steel flanged end valves
Pneumatic actuators and accessories
Stainless steel screwed 150LB fittings
Stainless steel camlocks
Cast iron butterfly valves and wafer check valves
Cast iron Table E Y-strainer
Stainless steel butterfly valves
Stainless steel wafer check valves
Needle valves

Other products on request:

Cast iron valves
Brass and bronze valves
Cryogenic valves
Marine valves
Teflon lined valves
Steam products
Instrument fittings & gauges
Schedule pipe & fittings
Flanges
Expansion joints
Other accessories



Unimech Engineering (Aust) Pty Ltd

Address: Unit 1,52 Heathcote Road Moorebank NSW 2170 Australia

Tel: 02 9600 7179

Fax: 02 9602 3135

Website: www.unimech.com.au

Email: sales@unimech.com.au